



TMU
TAIPEI
MEDICAL
UNIVERSITY



MedAspire Program

2025 SUMMER
PROGRAM JULY 07 ▶ 20

Your Medical Journey Begins Here.
Join TMU. Become a Leader in Medicine.



AS A MEMBER OF THE MEDICAL PROFESSION:

I SOLEMNLY PLEDGE

To dedicate my life to the service of
humanity

THE HEALTH AND WELL BEING OF MY PATIENT

Will be my first consideration

I WILL RESPECT

The autonomy and dignity of my patient

I WILL MAINTAIN

The utmost respect for human life

I WILL NOT PERMIT

Considerations of age, disease or
disability, creed, ethnic origin, gender,
nationality, political affiliation, race,
sexual orientation, social standing or any
other factor to intervene between my duty
and my patient

I WILL RESPECT

The secrets that are confided in me, even
after the patient has died

I WILL PRACTISE

My profession with conscience and
dignity and in accordance with good
medical practice

I WILL FOSTER

The honour and noble traditions of the
medical profession

I WILL GIVE

To my teachers, colleagues, and
students the respect and gratitude that
is their due

I WILL SHARE

My medical knowledge for the benefit
of the patient and the advancement of
healthcare

I WILL ATTEND TO

My own health, well-being, and abilities
in order to provide care of the highest
standard

I WILL NOT USE

My medical knowledge to violate human
rights and civil liberties, even under
threat

I MAKE THESE PROMISES

Solemnly, freely, and upon my honour



World Medical Association
Declaration of Geneva | 2017





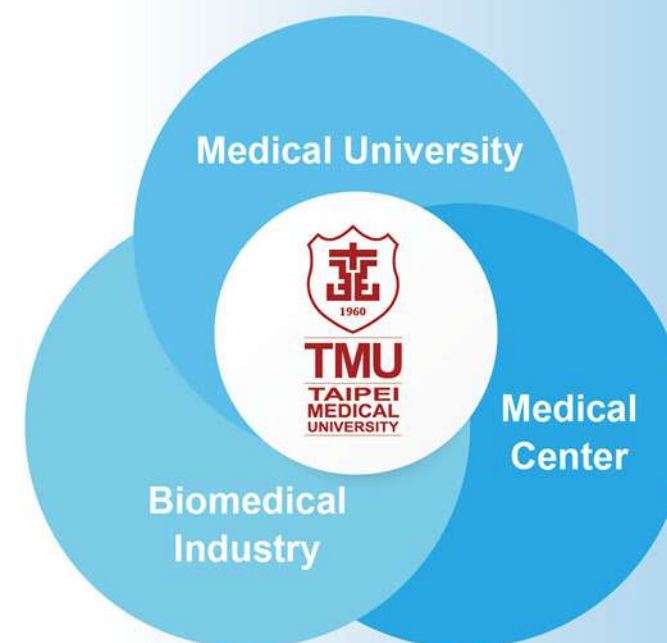
▲ QS, Quacquarelli Symonds UK Higher Education – World University Rankings (Subject)

Times Higher Education Impact Rankings



▲ THE Impact Rankings Times Higher Education – The contribution of universities around the world to the SDGs, Taipei Medical University's impact ranking:

Innovation Campus



Xinyi Campus X Shuang Ho Campus

Data Integration

- Clinical Data
- NGS genetic data
- Health Insurance

Clinical trials

- Clinical trial design
- implement
- Audit

Career Transformation

- Biodesign
- Accelerator
- Technology Industrialization Promotion Platform

Value Industry

- International Marketing
- Market expansion
- Medical Innovation

▼ Taipei Medical University Healthcare System



Taipei Medical University Hospital



TMU Wanfang Hospital



TMU Shuang Ho Hospital



TMU Taipei Cancer Center



Taipei Neuroscience Institute



TMU Hsin Kuo Min Hospital



TMU Xingai Residential Long Term Care Institution



Taipei Medical University
20 MedAspire
25 Summer Program
July 7 – July 20



About TMU	P02
Program Overview	P06
Program Highlights	P08
Program Fee	P10

Program Curriculum	P14
Why Choose TMU MedAspire?	P26
Program Completion Benefits	P28
Beneficiary's Information	P32
Agenda	P34

Program Overview

Taipei Medical University (TMU) proudly presents the TMU MedAspire Program, a prestigious summer initiative designed for high school and college students from the United States, Canada, Europe, Taiwan, and beyond who aspire to explore pre-medical studies and global healthcare perspectives.

This intensive program offers a unique opportunity to engage in a rigorous MedAspire curriculum led by renowned physicians, scientists, entrepreneurs, and professors from TMU and its affiliated healthcare system.

Participants will gain hands-on medical experience, explore cutting-edge biomedical research, and develop a deeper understanding of the medical profession. Beyond academics, students will immerse themselves in Taiwan's rich cultural heritage, guided by top TMU medical students who provide a genuine and immersive experience of medical student life in Taiwan.





20 Taipei Medical University **25** MedAspire Summer Program July 7 – July 20

Program Details

Online Course

3 Hours

To Be Completed Before the On-Site Program

On-Site Program

14 Days, 13 Nights

Taipei Medical University

Venue

Taipei Medical University, Taiwan

Target Audience

High school and college students

Supervising Unit

Office of Continuing and
Extension Education

Capacity

30 participants

Program Highlights

Foundations of Medicine &
Biomedical Sciences

Clinical Exposure & Medical
Simulation Training

Medical Innovation & AI in
Healthcare

Global Health & Public Health

Cultural & International Medical
Perspectives

Medical School Mentorship



Program Fee & Inclusions

Fee USD 4,880 per participant

Discount Offers (Combinable Discounts)

Cash Payment Discount – USD 100 off
for bank transfers

Early Bird Discount – USD 100 off
(Payment completed by **April 15, 2025**)

Group Discount – USD 100 off
per participant (for groups of 3 or more)

What's Included?

Tuition for all MedAspire courses and lab activities

- Medical simulation & laboratory materials
- Weekend cultural excursions and guided tours
- Daily meals (breakfast, lunch, and dinner)
- TMU On-campus accommodation (shared rooms)
- 4-person air-conditioned room

(with desk below and wooden beds on top, sleeping bag & Washing tools, other items as personal habit @No. 92-1, lane 22, Alley 284, WuXing Street, Xinyi District, Taipei City)

The program provides on-campus accommodation at Taipei Medical University's student dormitory. No refunds will be issued for participants who choose not to stay in the dormitory.





• Accommodation Policy for Participants Under 18

All participants under the age of 18 are required to stay in Taipei Medical University's student dormitory for the duration of the program. For those who choose not to stay in the dormitory, a Parental Consent Form must be signed by a parent or legal guardian. Additionally, parents or guardians must personally arrange daily transportation for the participant to and from the program venue.

• Optional Airport Transfer Service

For participants requiring additional airport pickup and drop-off services, arrangements can be made upon successful registration. Additional fees apply. Please contact the program organizer for assistance and coordination.

• Refund Policy

Participants who wish to withdraw from the program may request a refund based on the following schedule:

- More than **28 days before** the program start date (including the first day):
90% of the paid fee will be refunded.
- Between **28 and 14 days before** the program start date (including the first day):
80% of the paid fee will be refunded.
- Between **14 and 10 days before** the program start date (including the first day):
70% of the paid fee will be refunded.
- Within **10 days before** the program start date:
No refund will be provided.

• Exclusions from Program Fees (Not Included):

- Round-trip airfare
- Personal medical expenses
- Extra accommodation, meals, or transportation outside program dates
- Other personal expenses

• Important Notes & Requirements

- Participants are responsible for their own airfare to and from Taiwan
- A valid passport and appropriate visa (if required) must be secured prior to travel
- Health insurance covering the duration of the program is mandatory
- Participants must adhere to TMU's academic integrity and behavioral guidelines throughout the program
- Parents/guardians will receive regular updates on student progress and activities

• Laptop Requirement

Participants are required to complete course reports, research tasks, and international academic poster presentations, which involve information retrieval and academic writing. Please bring a personal laptop or other necessary electronic learning devices.



Program Curriculum

The TMU MedAspire Program is a distinguished 14-day immersive medical education experience designed for high school and college students with aspirations to enter the medical profession. Hosted by Taipei Medical University (TMU)—one of Asia’s most prestigious medical institutions—this program offers a comprehensive, hands-on approach to pre-medical studies, integrating cutting-edge scientific research, clinical exposure, medical innovation, and global healthcare perspectives.

Participants will engage in rigorous academic coursework, interactive laboratory sessions, and state-of-the-art medical simulation training, led by renowned physicians, scientists, entrepreneurs, and faculty members from TMU and its affiliated healthcare system. Beyond the classroom, students will gain valuable cultural insights by exploring Taiwan’s historic landmarks, vibrant cities, and renowned healthcare ecosystem.

This program is more than just a summer camp—it is a transformative journey that provides students with a head start in medical education, helping them refine their career aspirations, enhance their academic portfolios, and build a global network of future medical professionals.

Comprehensive MedAspire Curriculum: A Multidisciplinary Approach

The TMU MedAspire Program is structured around five key learning areas, ensuring participants receive a well-rounded and intensive pre-med education that prepares them for the challenges of medical school.

1 Core Medical Sciences: Building a Strong Foundation

Understanding the human body is the cornerstone of medical education. In this segment, students will explore:

Human Anatomy & Physiology

Delve into the structure and function of human tissues and organ systems, essential for future studies in medicine.

Histology & Cellular Biology

Examine the microscopic composition of tissues, gaining insights into cell function and disease pathology.

Microbiology & Parasitology

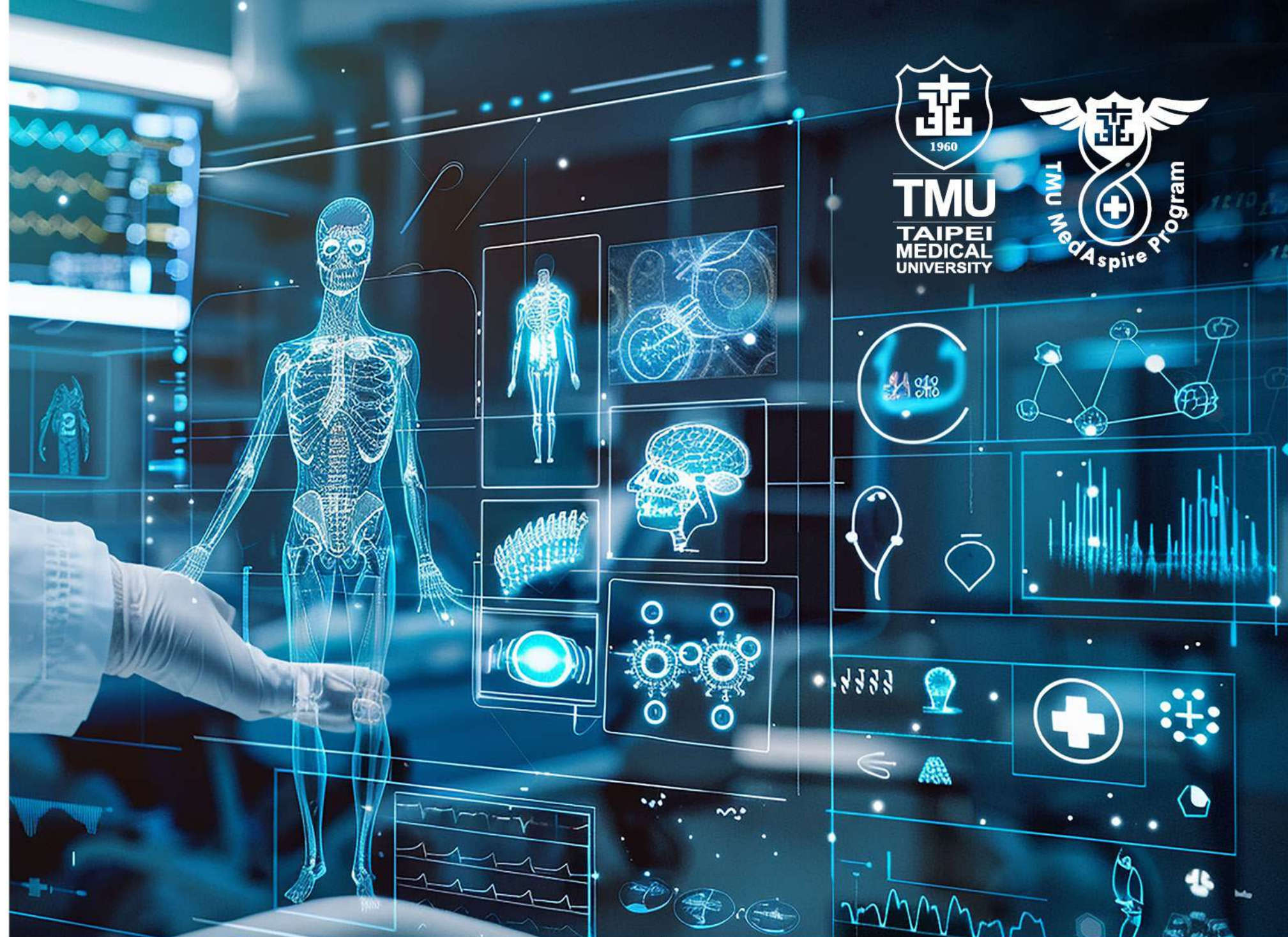
Investigate bacteria, viruses, and parasites under high-powered microscopes, understanding their role in infectious diseases and immune system responses.

Biotechnology & Regenerative Medicine

Learn about stem cell research, gene therapy, and tissue engineering, exploring the future of personalized medicine and organ regeneration.

Laboratory Experiments

Students will have the exclusive opportunity to observe live microscopic samples, conduct hands-on laboratory experiments, and engage in discussions with biomedical experts who are shaping the future of medicine.



2 Clinical Exposure & Medical Simulation: Training Like a Doctor

Bridging the gap between theoretical knowledge and practical medical skills, this segment provides early clinical exposure through:

Medical Simulation & OSCE Training

Participate in lifelike clinical scenarios, practicing patient assessment, emergency response, and critical decision-making in TMU's internationally accredited Medical Simulation Center.

Basic Life Support (BLS) Certification

Learn and practice life-saving techniques, including CPR, airway management, and defibrillator usage.

Physician's Training Modules:

- **Patient History-Taking Skills**

Develop effective doctor-patient communication techniques, learning how to gather and interpret patient information.

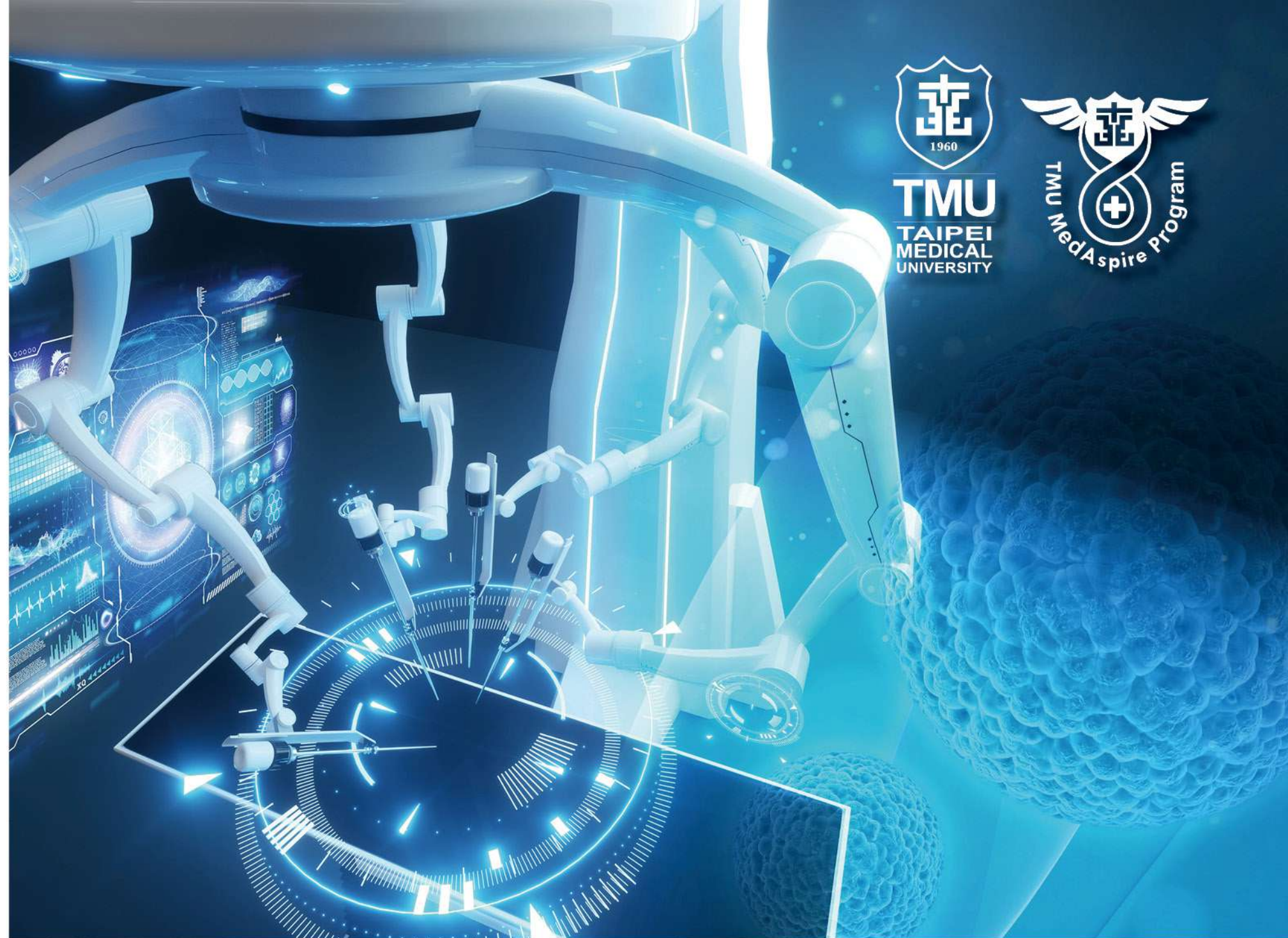
- **Physical Examination Techniques**

Train in clinical skills such as pulse measurement, reflex testing, and cardiovascular assessments, under the supervision of experienced physicians.

- **Electrocardiogram (ECG) Interpretation**

Analyze real patient heart rhythms, identifying normal and abnormal cardiac activity.

Medical school training methods Students will experience the same training methods used in medical school, providing them with a competitive advantage in their future medical education.



3

Medical Innovation & Healthcare Technology: The Future of Medicine

Modern healthcare is driven by innovation, artificial intelligence, and biotechnology. This segment introduces students to:

Artificial Intelligence in Medicine

Learn how machine learning and AI are revolutionizing medical diagnostics, treatment planning, and robotic surgery.

Medical IoT (Internet of Things) & Smart Healthcare

Participate in interactive experiments, exploring how connected devices improve patient monitoring, hospital efficiency, and remote healthcare delivery.

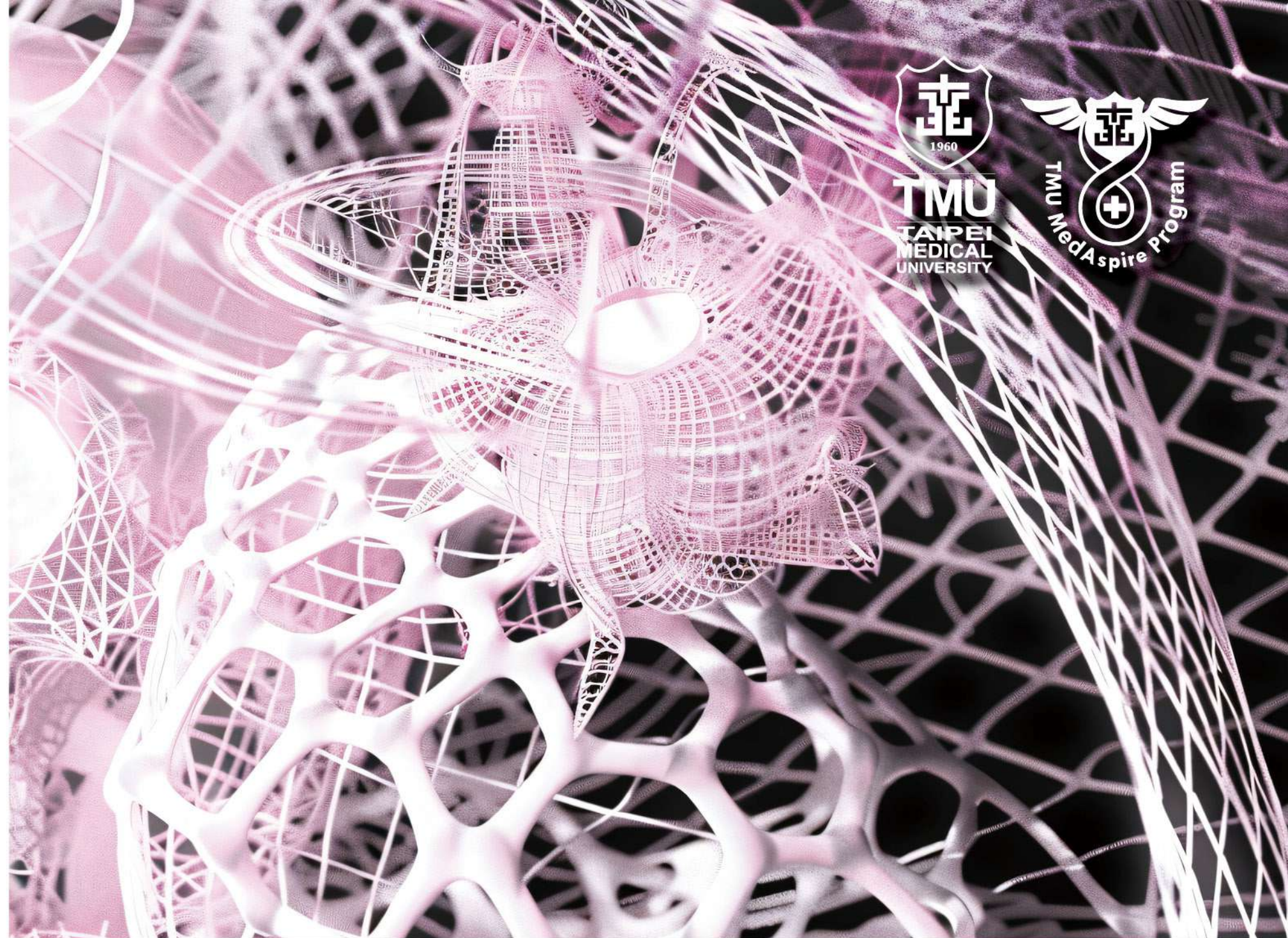
3D-Printed Organs & Future Transplantation

Gain insights into the latest advancements in bioengineering, addressing global organ shortages through 3D bioprinting technologies.

Biomedical Accelerator & Entrepreneurship

Tour TMU's pioneering biomedical accelerator, where medical startups and researchers collaborate to develop groundbreaking healthcare solutions.

This segment inspires students to think like medical innovators, equipping them with knowledge of emerging healthcare trends that will define their future careers.



4

Global Health, Ethics & Resilient Healthcare: Preparing for a Changing World

The world of medicine extends beyond hospitals and laboratories. This segment focuses on:

Medical Ethics & Bioethical Decision-Making

Discuss complex ethical dilemmas faced by healthcare professionals, including genetic engineering, end-of-life care, and organ transplantation ethics.

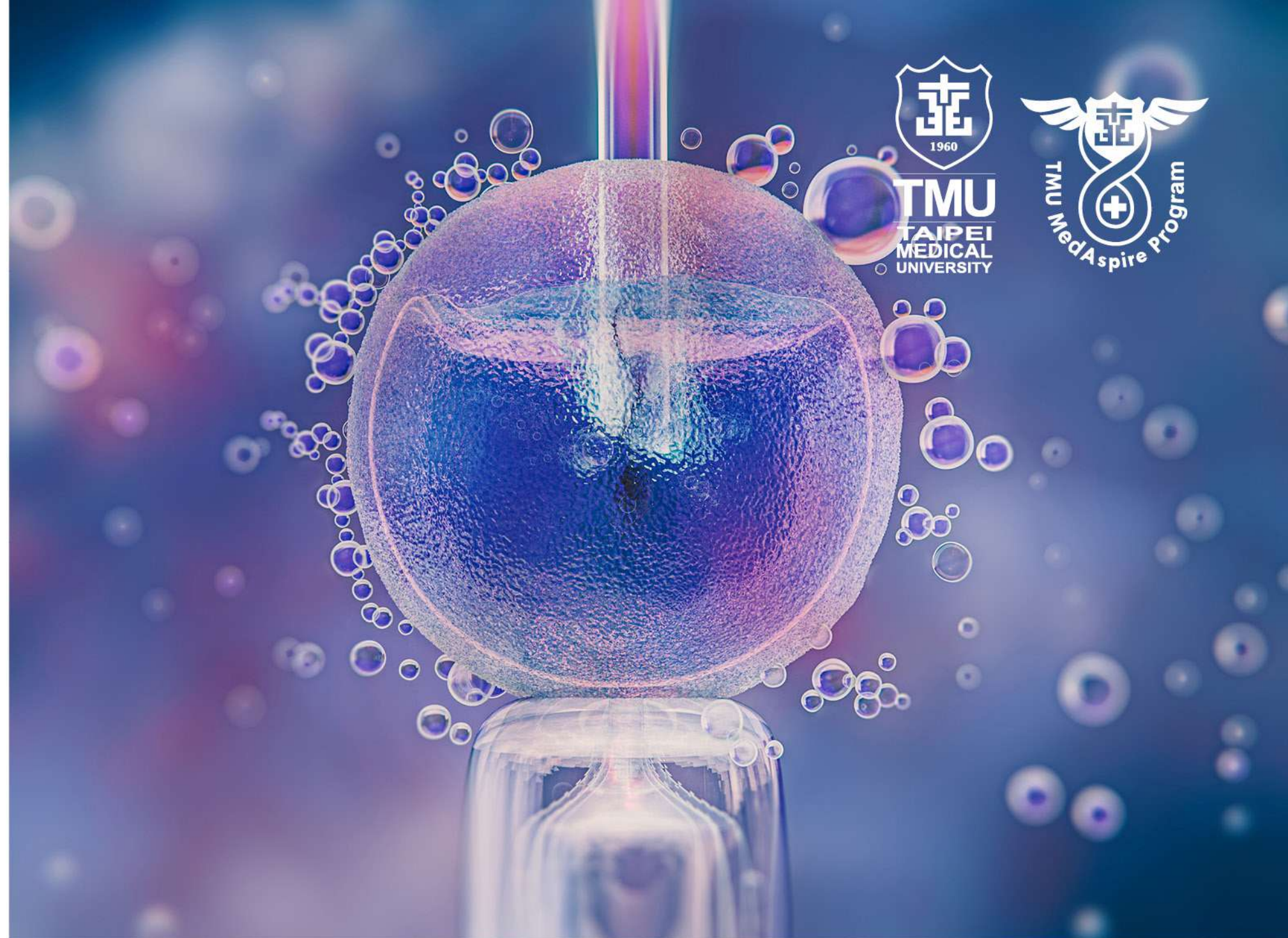
Public Health & Global Epidemics

Analyze historical and contemporary pandemics, exploring the impact of emerging infectious diseases on global healthcare systems.

Cross-Generational Physician Dialogue

Engage in roundtable discussions with experienced and young physicians, gaining insights into medical careers, global healthcare policies, and leadership in medicine.

This session fosters a deeper understanding of medical ethics, global healthcare challenges, and the role of resilience in modern healthcare.



5 Cultural Immersion & City Exploration: Discovering Taiwan

Beyond academics, the TMU MedAspire Program offers an exciting lineup of cultural experiences, allowing students to discover Taiwan's rich history, vibrant city life, and breathtaking landscapes.

Historical & Cultural Landmarks

• National Palace Museum

Home to over 700,000 ancient Chinese artifacts, providing a deep dive into Asian art, history, and heritage.

• Dadaocheng Herbal Medicine & Tea Ceremony

Experience Taiwan's traditional herbal medicine markets, followed by an authentic tea ceremony highlighting the healing properties of Eastern medicine.

Taipei City & Night Market Adventures

• Taipei 101 & Xinyi District

Visit Taiwan's most iconic skyscraper, exploring world-class shopping, modern architecture, and panoramic city views.

• Shilin & Ningxia Night Markets

Indulge in Taiwan's most famous street food, including bubble tea, oyster omelets, and pineapple cakes.

• Ximending Youth District

Explore the fashion, pop culture, and entertainment hub of Taipei, known as the "Harajuku of Taiwan."

Scenic Coastal Excursions

• Tamsui Old Street & Golden Coast

Wander through colonial-era streets, sample local seafood, and watch a stunning sunset along Taiwan's golden coastline.

These carefully curated cultural experiences ensure that students immerse themselves in Taiwan's dynamic blend of tradition and innovation.





Why Choose TMU MedAspire?

Comprehensive Pre-Med Training

Gain hands-on experience in clinical, biomedical, and ethical aspects of medicine.

Exclusive Access to Top Medical Experts

Learn from world-class professors, physicians, and researchers.

Cutting-Edge Technology & Medical Innovation

Explore AI, 3D-printed organs, and smart healthcare solutions.

Global Network & Cultural Immersion

Connect with like-minded future medical professionals from around the world.

Unforgettable Adventures in Taiwan

Discover a country that blends ancient heritage with modern medical excellence.



Achieve More with TMU MedAspire Your Gateway to Medical Excellence!

By completing the TMU MedAspire Program, you will gain invaluable pre-medical training, hands-on clinical experience, and internationally recognized credentials that will set you apart in your journey toward a medical career.



Program Completion Benefits

- **Training Certificate Awarded by Prestigious International Healthcare Institutions**
- **Obtain Basic Life Support (BLS) Certification**
Essential for Emergency Medical Response
- **Receive an OSCE Examination Certificate**
A Key Assessment in Clinical Competency
- **Present at an International Academic Conference**
Showcase Your Medical Research through a Professional Academic Poster
- **Gain Volunteer Service Certification**
Demonstrate Your Commitment to Community and Healthcare

Relevant certificates will be awarded by the global partners and international healthcare institutions collaborating with this program.

Program Participation & Certification Policy

Participants are required to fully attend and complete the entire program. To receive academic credit certification and relevant certificates, students must meet the following requirements:

- **100% attendance in all scheduled courses and activities.**
- **Successful completion of all assessments and evaluations.**

Participants who fail to complete the required coursework, assessments, or miss any sessions will not be eligible for refunds, certificates, or credit verification.



Online
Registration

*Stand Out,
Get Certified*

20 Taipei Medical University
25 MedAspire
Summer Program
July 7 – July 20



**Stand Out, Get Certified, and Take Your First
Step Toward a Bright Future in Medicine!**

TMU MedAspire Program
A Premier Pathway to Future
Medical Excellence.

Empowering the Next Generation
of Healthcare Leaders.

**Embark on Your Medical Journey –
Join the TMU MedAspire Program Today**



Taipei Medical University
20 MedAspire
25 Summer Program
July 7 – July 20



Beneficiary's Information

A/C with BANK	Taishin International Bank (SWIFT Code: TSIBTWTP)
Branch	JIANPEI BRANCH
Branch Address	No. 17, SEC. 2, JIANGUO N. RD., JHONGSHAN DISTRICT, TAIPEI CITY 104, TAIWAN(R.O.C.)
Beneficiary's A/C No.	20681000097230
Beneficiary's Name	TAIPEI MEDICAL UNIVERSITY

* Please comply with the academic regulations and related policies of Taipei Medical University.

* To ensure the optimal learning outcomes of this program, the organizing institution reserves the right to modify, amend, suspend, or terminate any part of the program at any time and retains the final right of interpretation.

* Any changes will be announced in due course, and applicants are expected to comply accordingly.

2025 Taipei Medical University MedAspire

Summer Program
July 7 – July 20



Program	July 7	July 8	July 9	July 10	July 11	July 12	July 13
09:00 ▼ 12:00	Flight Itinerary Arrival in Taiwan	Opening Ceremony Medical Master Lecture Series Smart and Resilient Healthcare	Introduction to Microorganisms and Parasites with Microscopic Observation **TMU Laboratory	Organ Donation 3D-Printed Organs Medical IoT Experiment **TMU Shuang Ho campus	Bibliometric Analysis of Trends in Medical Research	Cultural Interaction: Guided Tour of the National Palace Museum	Cultural Interaction: Traditional Herbal Medicine and Tea Ceremony Culture
13:30 ▼ 17:00		Medical Master Lecture Series: Biotech Translation and Regenerative Medicine *TMU Hospital *Gallery of TMU History *Gallery of TMU Medical Education	Gross Anatomy Human Tissue and Organ Structures **TMU Gross Anatomy Laboratory	Biodesign Medical Innovation and Entrepreneurship Ecosystem Biological Accelerator Medical Center University Town: Exploration of Specialized Medical Facilities **TMU Shuang Ho campus	International Academic Poster Writing and Production for Medical Research	Cultural Interaction: Guided Tour of the National Palace Museum, Shilin Night Market	Cultural Interaction: Exploring Walking and Kitty! District with Taipei 101
Program	July 14	July 15	July 16	July 17	July 18	July 19	July 20
09:00 ▼ 12:00	Visiting Taipei Fertility Center and IVF Laboratory **Taipei Fertility Center(TFC)	Physician's Training on Physical History	Basic Life Support	Clinical Skills Training	Standardized Patient OSCE Exam	Dialogue and Exchange Across Generations of Physician Closing and Awards Ceremony & Learning Achievement Showcase	Flight Journey
13:30 ▼ 17:00	Advanced Medical Care: Radiological Medicine and Proton Therapy Center	Physician's Training on Physical Examination	Pandemic virus Major infectious diseases worldwide Skills practice at the Medical Simulation Center	Electrocardiogram (ECG) Experiment Skills training at the Medical Simulation Center	International Conference and Academic Poster Presentation in Medical Research **Classroom 8006, Comprehensive Medical Building(Rear Building)	Cultural Interaction: Tamsui Old Street and Golden Coast	

Cheng-Pu
Conference
Hall

Shuang Ho
Hospital

College of Interdisciplinary
Studies (iCollege),
Xing-Chun Building

Center for Education
in Medical Simulation
(CEMS)

TMU
Hospital



Contact Information | Taipei Medical University

ADDRESS | No. 250, Wuxing St., Xinyi District, Taipei City
11031, Taiwan (1F Pharmacy and Nutrition Building)

E-MAIL | medaspire.tmu@gmail.com

TEL | +886-2-2736-1661#8615 Ms. Huang

TEL | +886-2-2509-5279 Maxine & Wicky

FAX | +886-2-2509-0852